

THE PATHFINDER ENDEAVOUR

Sustainable Development with Malaria as Tracer (v.3)

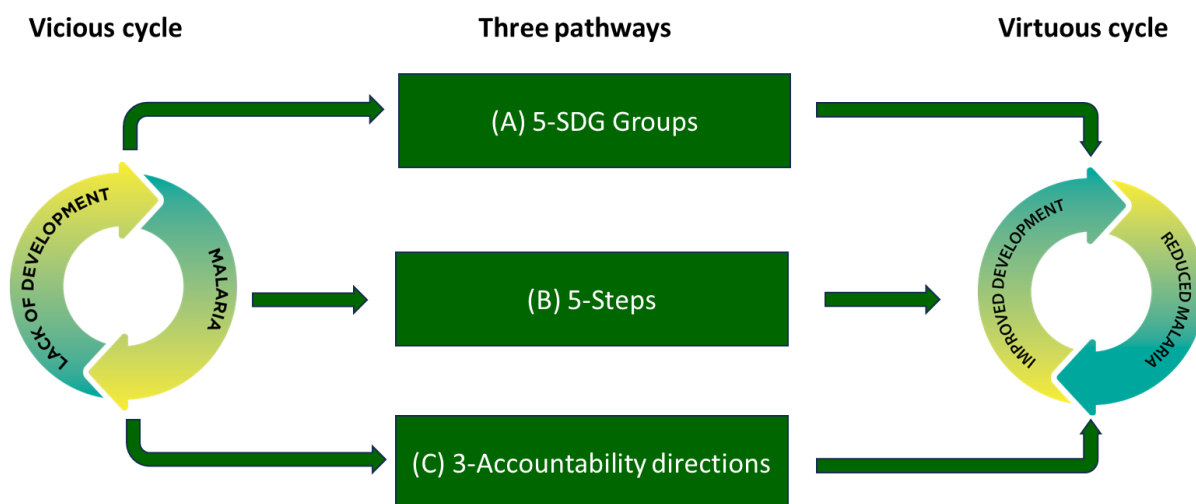
Development and malaria are intrinsically connected. History and contemporary experience show that sustainable results are **not possible without concurrent improvements** to both.

95% of all malaria cases occur in **Africa**. Countries with intensive malaria lose 1.3% **economic growth** every year. GDP per capita in countries not affected by malaria grows **five times faster** than in countries affected by a heavy malaria burden.

Countries and within countries, areas and populations are trapped in **a vicious cycle** that leaves them the **furthest behind** socially and economically.

From vicious to virtuous.

Comprehensive multisectoral action through **three concurrent pathways** in **uncharted territory**: (A) progress on the 17 sustainable development goals (SDG) in five groups; (B) climb five steps to become malaria-smart; and (C) take political, technical, and public accountability.



Note! The three pathways also apply to **neglected tropical diseases** and some **enteric diseases**.

A real-life 'try, learn and share' endeavour.

District focus to **unlock synergies** and **release co-benefits** across all sectors and actors. Together, **complement** and get more out of **existing structures and resources** for **sustainable results**. Champion teams spearhead four phases to: **tool-up – implement – evaluate**. 2 1/2 years with guidance, physical and virtual workshops, peer review and cross-learning, technical assistance, and catalytic funding.

Development partners	Country champions
<u>Onboard</u> – UNDP, UNHabitat, WHO (GMP, NTD, SDH), and RBM-Partnership to End Malaria <u>In discussion</u> – Evaluation, data, communications, and funding partners	<u>National Pathfinder Champion Team</u> (4 x cty) – MoLG, MoH, a lead dev. partner <u>District Pathfinder Champion Team</u> (3 per cty) – Local government, health, locally present dev. partner

5-SDG Groups

Group 1. Political / Institutional



Group 2. Economic



Group 3. Social



Group 4. Environment and climate



Group 5. Health



In addition to the relevant global malaria, NTD and enteric disease indicators

The district chooses, monitors, and acts on at least two **malaria-critical indicators** for each of the five SDG groups.

Guidance to **collect and analyze disaggregated** SDG-indicator data within district.

Guidance to effectively **improve and level-up** SDGs, areas and populations left behind.

Guidance and tools for **local councils and assemblies** to use disaggregated data for policymaking, planning, and action.

Guidance to **articulate needs** and **call for support**.

5-Steps

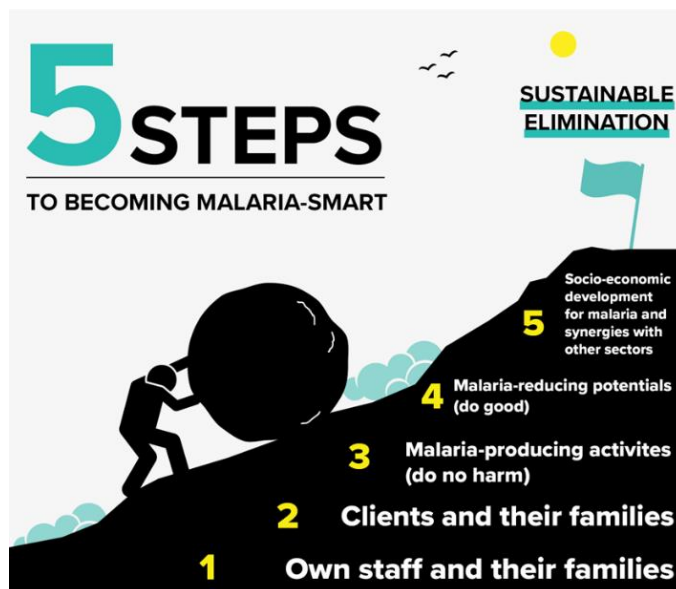
Step 1 – Engage public and private **employers** in demand-side actions to reduce barriers in effective coverage of conventional disease interventions for own staff and their families.

Step 2 – Engage public and private **providers of goods and services** to do the same for clients, customers, and their families.

Step 3 – Guidance to map, analyze, and act on malaria-producing areas and activities (**do-no-harm**)

Step 4 – Guidance to map, analyze, and encourage processes and activities with malaria-reducing potentials (**do-good**)

Step 5 – Guidance to map, analyze and address **root-causes of inequities** within the district.



3-Accountability directions

- **Political** // **local councils** to act, monitor, and hold district and national players accountable.
- **Technical** // **analyze and act** on GTS, NTD, enteric disease and SDG indicators.
- **Public** // direct and real-time **engagement of citizens**, including through digital platforms.

The Pathfinder Secretariat: <https://undp-capacitydevelopmentforhealth.org/the-comprehensive-multisectoral-action-framework-for-malaria-and-sustainable-development/>. **Mail:** erik.blas@undp.org